



MODUTECH®

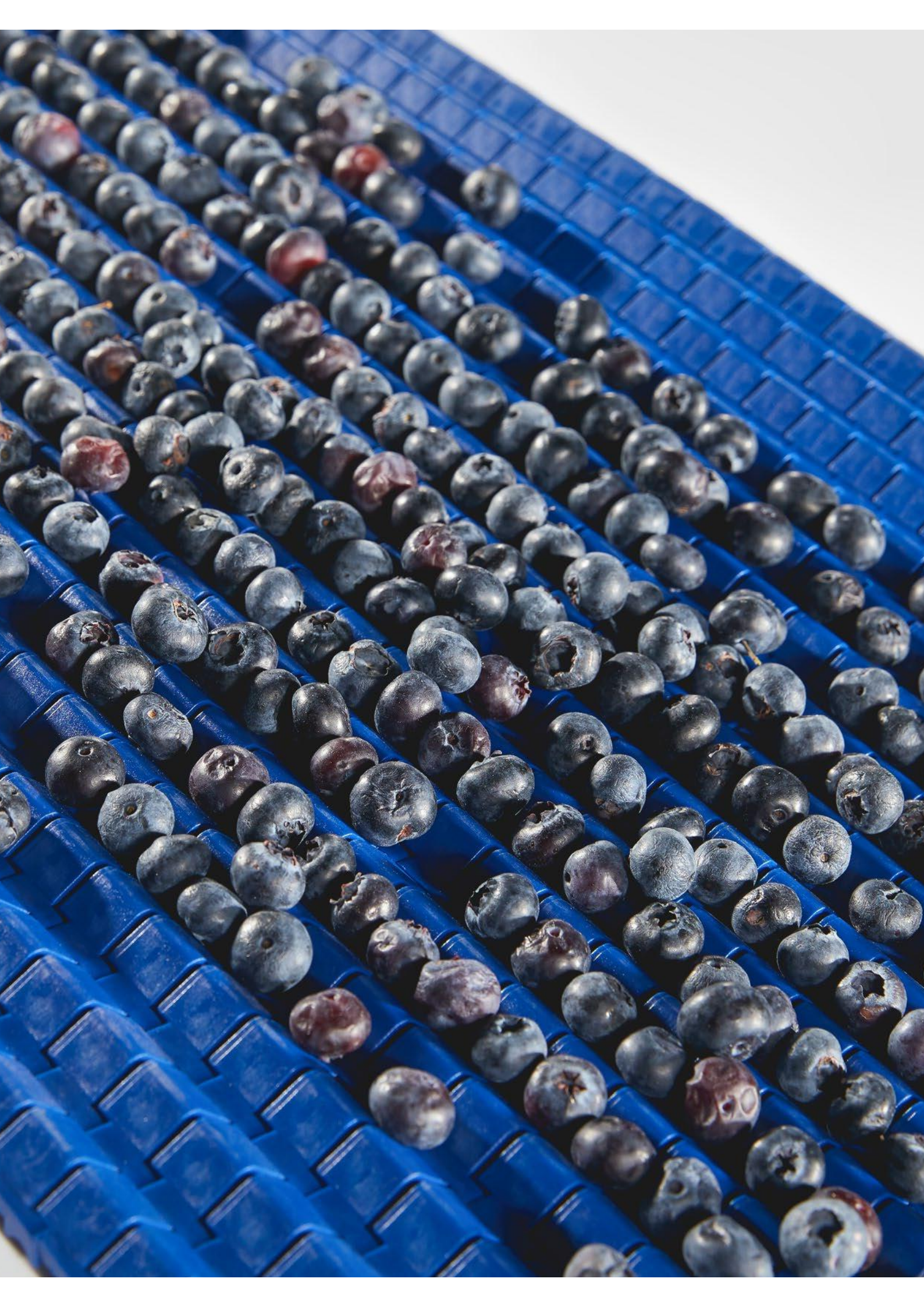
# HC127

*Modular Belt Series*

*HC127 C*

*Sprockets  
Engineering Information*







# HC127 C

## Modular Belt Serie

- **Meat (Beef and Pork) Applications**

*Fat - Trim Lines, General Conveyence, Packing Lines, Elevator*

- **Poultry Applications**

*Debonning, Trim Lines, Offal - Feather Lines, Grading Lines, Freezing Lines, Elevator*

- **Seafood Applications**

*Inspection Tables, Grading Lines, Trim Lines*

- **Bakery Applications**

*Row Dough Handling, Cooling Lines, Packing Lines*

- **Snack Food Applications**

*Corn Processing*

- **Fruits and Vegetables Applications**

*Bulk Feeding, Elevator, Control - Sorting Table*

- **Packaging Applications**

*Labelling, Palletizing - Depalletizing*

# HC127 C

Pitch:	12,7 mm / <b>0.5 inch</b>
Belt Surface:	Close, Smooth Surface
Minimum Width:	101,6 mm / <b>4 inch</b>
Open Area (%):	0%
Flight:	No
Sidewall:	No
Rod:	Ø4,5 mm / <b>0.177 inch</b>
Approved:	FDA and EU
Curve:	No
Color:	Additional colors available
Cleanability:	Excellent
Belt Thickness:	8 mm / <b>0.315 inch</b>



## Product Features and Functional Benefits

- Easy to clean reduces downtime for cleaning time 80%.
- Unique sprocket engagement - higher product load and longer conveyors.
- Close transfer applications.
- Reduces bacteria growth.

## Available Moulded Module Sizes

- 203,2 mm / **8 inch** module
- 101,6 mm / **4 inch** module

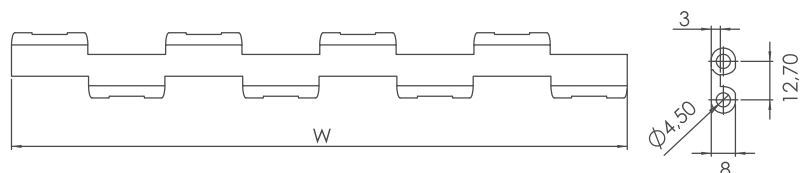
## HC127 C / Technical Information

BELT MATERIAL	BELT STRENGTH				TEMPERATURE		BELT WEIGHT
	Straight		Curve		°C / °F (min.)	°C/°F (max.)	Kg/m <sup>2</sup> / lb/ft <sup>2</sup>
	N/m	lb/ft	N/m	lb/ft			
Polypropylene	2750	<b>188</b>	-	-	+5 / <b>+41</b>	+90 / <b>+194</b>	3,8 / <b>0.78</b>
Polyethylene	-	-	-	-	-	-	-
Acetal	5170	<b>354</b>	-	-	-43 / <b>-45.4</b>	+110 / <b>+230</b>	5,7 / <b>1.17</b>

- Belt strength and temperature values are maximum on the table.

## HC127 C / Standard Belt Widths

BELT SERIES	WIDTH (W)				Belt With Tolerance (max.)
	PP		POM		
	mm	inch	mm	inch	
HC127 C	101,60	<b>4.0</b>	101,60	<b>4.0</b>	± 1 mm
HC127 C	203,20	<b>8.0</b>	203,20	<b>8.0</b>	± 1 mm
HC127 C	304,80	<b>12.0</b>	304,80	<b>12.0</b>	± 1 mm
HC127 C	406,40	<b>16.0</b>	406,40	<b>16.0</b>	± 1 mm
HC127 C	508,00	<b>20.0</b>	508,00	<b>20.0</b>	± 2 mm
HC127 C	609,60	<b>24.0</b>	609,60	<b>24.0</b>	± 2 mm
HC127 C	711,20	<b>28.0</b>	711,20	<b>28.0</b>	± 2 mm
HC127 C	812,80	<b>32.0</b>	812,80	<b>32.0</b>	± 2 mm
HC127 C	914,40	<b>36.0</b>	914,40	<b>36.0</b>	± 2 mm

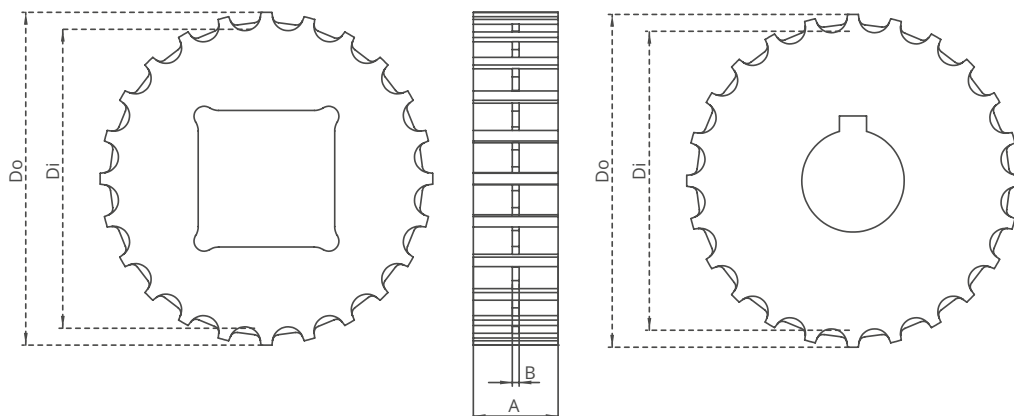


- Standard belt increments 101,6 mm.
- Non-standard belt increments 50,8 mm.
- Please contact with customer service for precise belt measurements.

# HC127 Series *Engineering Information*



Z36



## HC127 Series / Machined Sprockets Dimensions

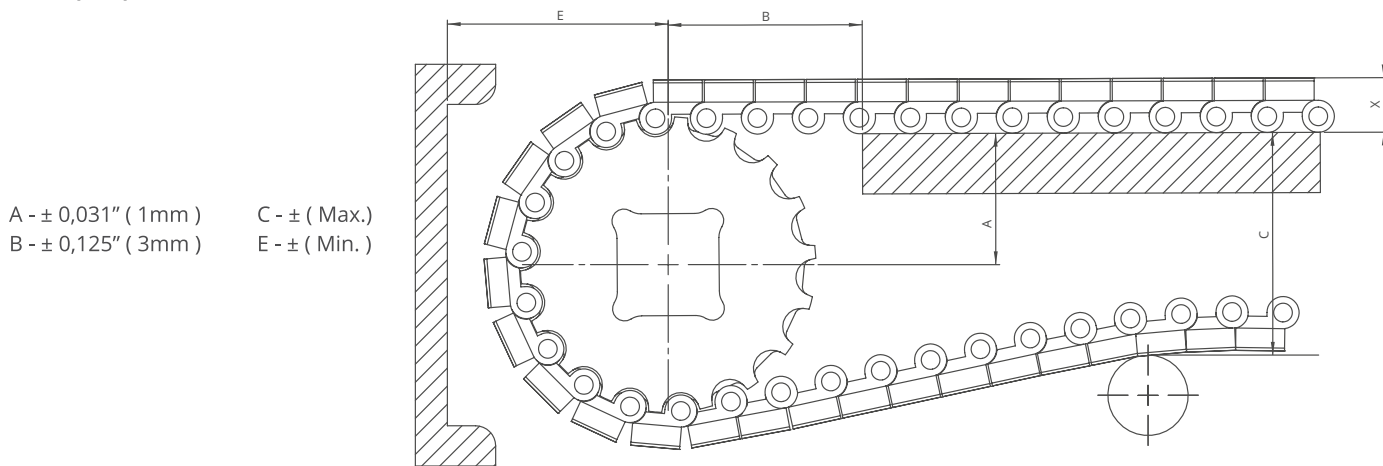
NO. TEETH	Di mm/inch	Do mm/inch	B mm/inch	A mm/inch	Square Bore (Q) mm/inch	Round Bore (R) mm/inch	PRODUCT CODE	
							Square Type (Q)	Round Type (R)
Z15	51,9 / <b>2.04</b>	61,4 / <b>2.42</b>	2 / <b>0.08</b>	25 / <b>1.0</b>	25 / <b>1-1.25</b>	25-30 / <b>1-1.25</b>	HC127SQZ15*POM	HC127SRZ15*POM
Z16	55,9 / <b>2.20</b>	65,5 / <b>2.58</b>	2 / <b>0.08</b>	25 / <b>1.0</b>	25 / <b>1-1.25</b>	25-30 / <b>1-1.25</b>	HC127SQZ16*POM	HC127SRZ16*POM
Z17	59,9 / <b>2.36</b>	69,5 / <b>2.74</b>	2 / <b>0.08</b>	25 / <b>1.0</b>	25 / <b>1-1.25</b>	25-30 / <b>1-1.25</b>	HC127SQZ17*POM	HC127SRZ17*POM
Z18	63,9 / <b>2.52</b>	73,6 / <b>2.90</b>	2 / <b>0.08</b>	25 / <b>1.0</b>	25-40 / <b>1-1.50</b>	25-30 / <b>1-1.25</b>	HC127SQZ18*POM	HC127SRZ18*POM
Z19	68,0 / <b>2.68</b>	77,7 / <b>3.06</b>	2 / <b>0.08</b>	25 / <b>1.0</b>	25-40 / <b>1-1.50</b>	25-30 / <b>1-1.25</b>	HC127SQZ19*POM	HC127SRZ19*POM
Z24	88,1 / <b>3.47</b>	98,1 / <b>3.86</b>	2 / <b>0.08</b>	25 / <b>1.0</b>	25-40 / <b>1-1.50</b>	25-30 / <b>1-1.25</b>	HC127SQZ24*POM	HC127SRZ24*POM

\*All required sprockets produced by CNC.

\*Other sprockets and hub sizes are manufactured up to request.

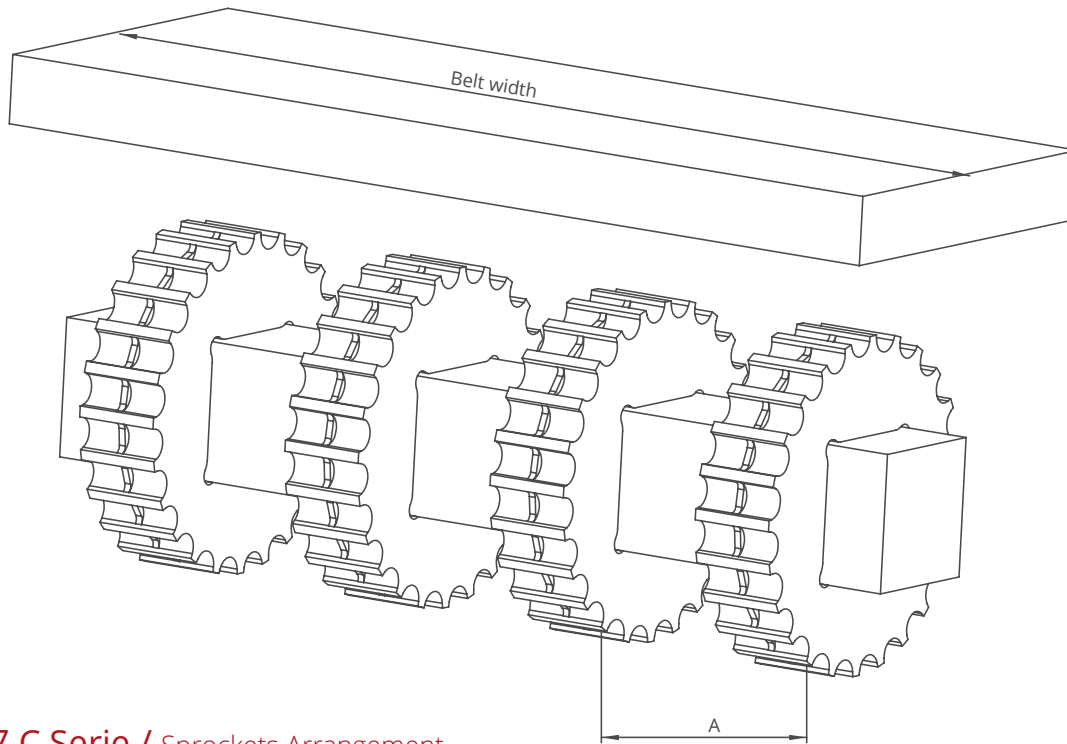
\*POM (Acetal) and PA (Polyamide) sprockets raw material is available on request.

**\*Machined Split Sprockets are available for each size.**



## HC127 Series / Conveyor Frame Dimensions

Sprockets Description			A		B		C		E		X	
Pitch Diameter		No. Teeth	Range (Bottom to Top)		Inch	mm	Inch	mm	Inch	mm	Inch	mm
Inch	mm		Inch	mm								
<b>HC127 C</b>												
<b>3.09</b>	78,4	19	<b>1.37</b>	34,7	<b>1.56</b>	39,7	<b>1.94</b>	49,4	<b>1.84</b>	46,7	<b>0.31</b>	8,0
<b>3.86</b>	98,0	24	<b>1.77</b>	44,9	<b>1.97</b>	50,0	<b>2.75</b>	69,8	<b>2.24</b>	56,9	<b>0.31</b>	8,0
<b>5.83</b>	148,0	36	<b>2.74</b>	69,5	<b>2.94</b>	74,7	<b>4.69</b>	119,0	<b>3.21</b>	81,5	<b>0.31</b>	8,0
<b>HC127 BLB</b>												
<b>3.09</b>	78,4	19	<b>1.37</b>	34,7	<b>1.56</b>	39,7	<b>2.17</b>	55,0	<b>2.06</b>	52,3	<b>0.53</b>	13,56
<b>3.86</b>	98,0	24	<b>1.77</b>	44,9	<b>1.97</b>	50,0	<b>2.97</b>	75,4	<b>2.46</b>	62,5	<b>0.53</b>	13,56
<b>5.83</b>	148,0	36	<b>2.74</b>	69,5	<b>2.94</b>	74,7	<b>4.90</b>	124,6	<b>3.43</b>	87,1	<b>0.53</b>	13,56



## HC127 C Serie / Sprockets Arrangement

Standard Belt Width		Number of sprockets per shaft		A (mm/inch)	
mm	inch	Drive Shaft	Return Shaft	Min.	Max.
101,6	<b>4.0</b>	2	2	50/2	100/4
203,2	<b>8.0</b>	3	2	50/2	100/4
304,8	<b>12.0</b>	4	3	50/2	100/4
406,4	<b>16.0</b>	5	3	50/2	100/4
508,0	<b>20.0</b>	6	4	50/2	100/4
609,6	<b>24.0</b>	7	5	50/2	100/4
711,2	<b>28.0</b>	8	6	50/2	100/4
812,8	<b>32.0</b>	9	7	50/2	100/4
914,4	<b>36.0</b>	10	8	50/2	100/4
1016,0	<b>40.0</b>	11	9	50/2	100/4
1117,6	<b>44.0</b>	12	9	50/2	100/4